



110 cm

# Ohpikiw mina pekiskwewin

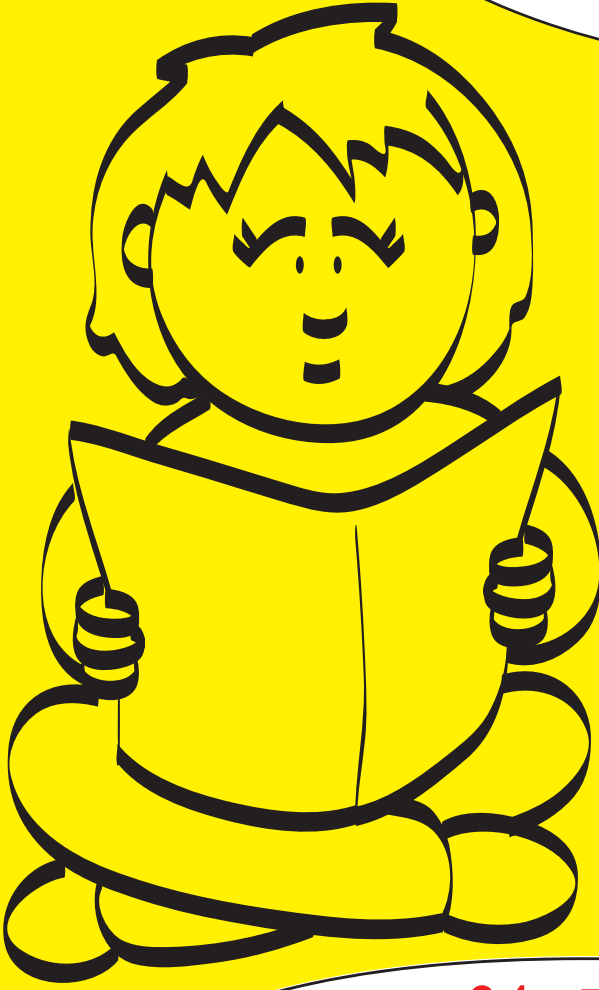
105 cm

100 cm

## 30 p̄sim

- Niya mamawipekiskwewina nisto p̄kiskwewinis ekwa.
- Niya naskwewasimowin wihcasin kakwecikemowin (Awina? Kikway? Tante?) Asici p̄kiskwewinis mina waskaw̄win.
- Niya ayāw p̄kiskwewinis ohci: niya, eyoko, pihci mina tahkoc.

95 cm



90 cm

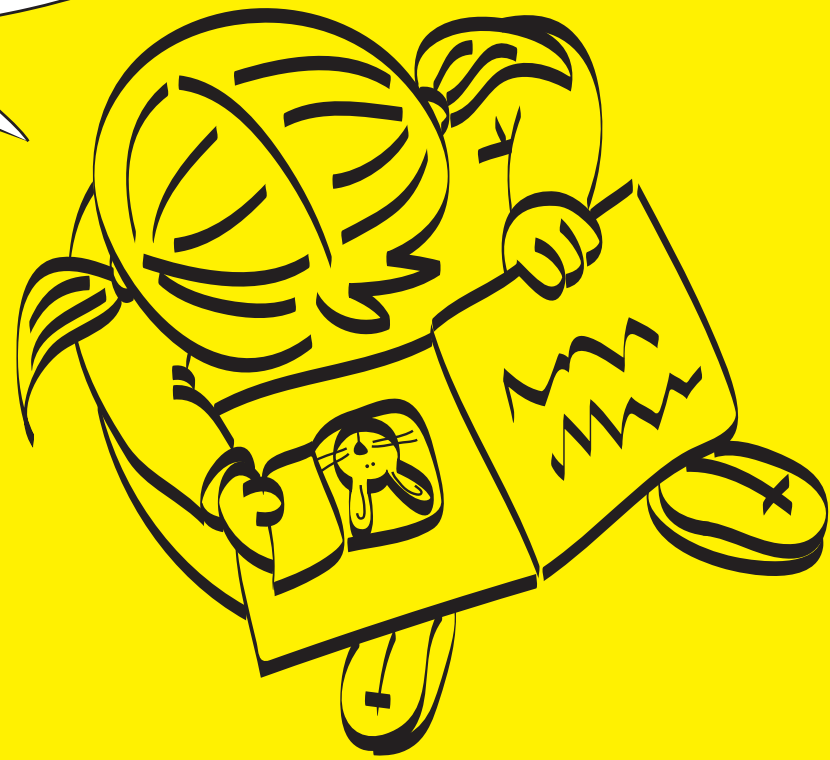
85 cm

80 cm

## 24 p̄sim

- Niya pekiskwewin pihci neso p̄kiskwewinis mamawipekiskwewina.
- Niya pekiskwewin 100 p̄kiskwewinis, ka mamiskotamihk mina waskaw̄win, ohci niya nin̄ikihikwak nisitohtamowin.
- Niya piwapiskos itōtā kikway nin̄ikihikwak kakwecihkemowin niya.
- Niya nitohtamowin ohci wihcasin ācimowin mina nikamowin.

75 cm



70 cm

65 cm

## 18 p̄sim

- Niya pekiskwewin ohci 18 p̄kiskwewinis ohci nin̄ikihikwak nisitohtamowin.
- Niya wāpiwin tante kisewehtāwin ohci wask̄w niya mistikwan asici eta kwayask kiskinwahikewin.
- Niya nisitohtamowin wihcasin pekiskwewin kiskinwahikewin ohci “nācimihtew eta pākahtowin”.
- Niya kakwe mina kahk̄htwam tōtamowin p̄kiskwewinis.

60 cm



55 cm

50 cm

45 cm

## 6 p̄sim

- Niya ayāw kapehtākwahk (oo, goo, bababa).
- Niya tōtamowin ohci kisewehtāwin, kitoheikewin mina eta kapehtākwahk pihtākosiwin.
- Niya wāpiwin eta ayisiyiniw pekiskwewina.

40 cm

35 cm

30 cm

